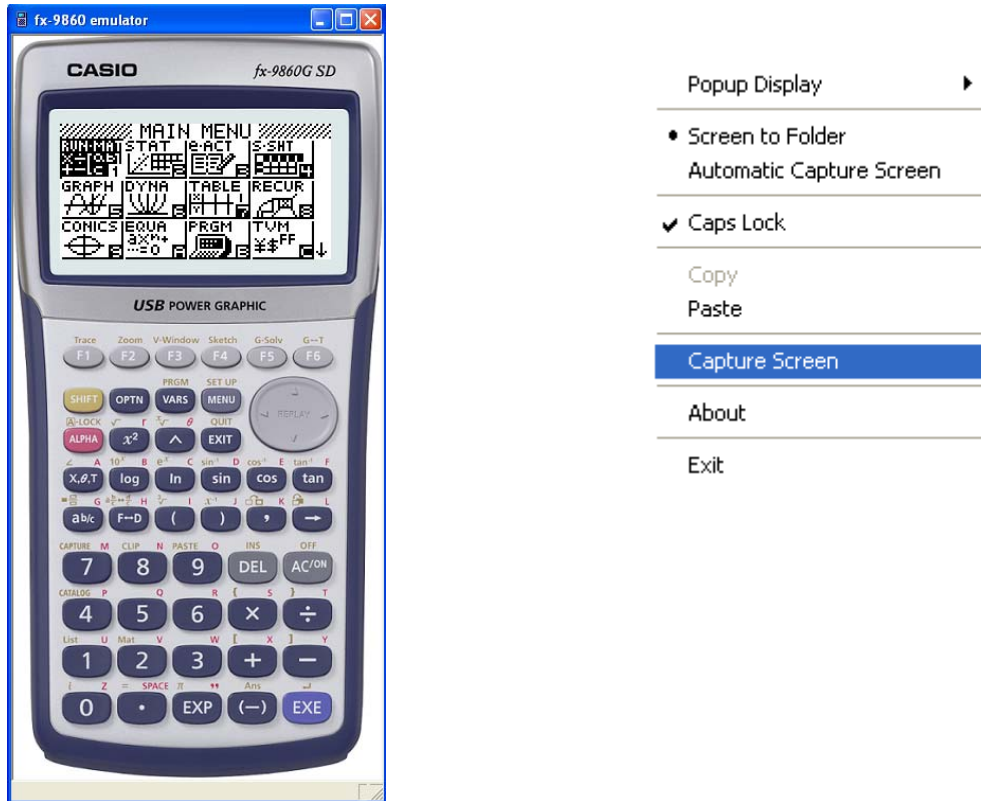


Capturar ecrãs

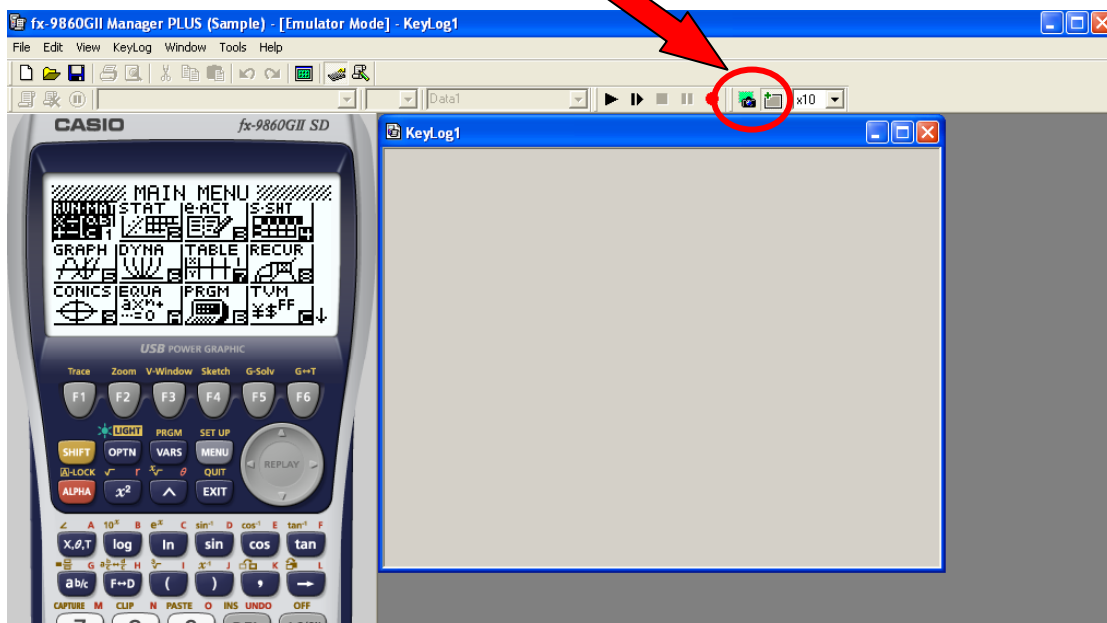
Pelo Emulador da FX-9860G / GSD

Com a tecla direita do rato, seleccione a opção "Capture Screen".
Depois basta copiar para o documento do Worl, Excel etc.



Pelo FX-9860GII Manager

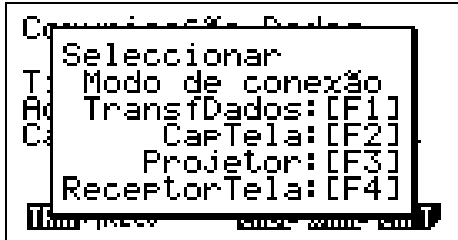
Basta pressiona esta tecla



Pelo FA-124

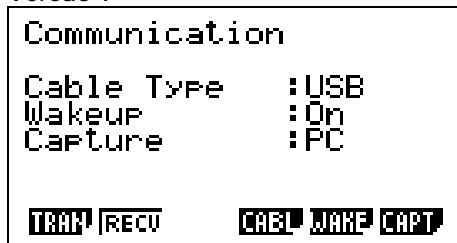
Ligue a calculadora ao PC usando o cabo USB.

Se tiver o modelo FX-9860GII (SD), deverá seleccionar a opção F2 na máquina

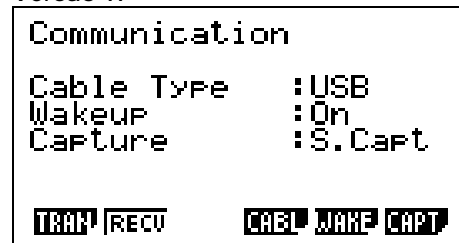


Tenha a calculadora com esta configurações

Versão I

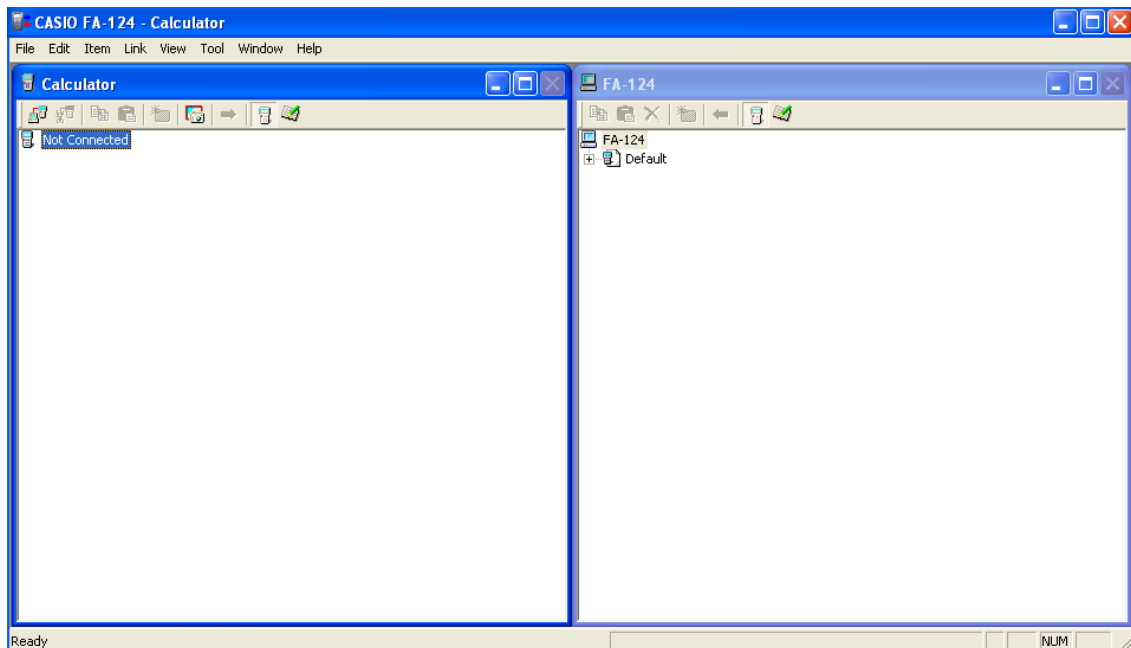


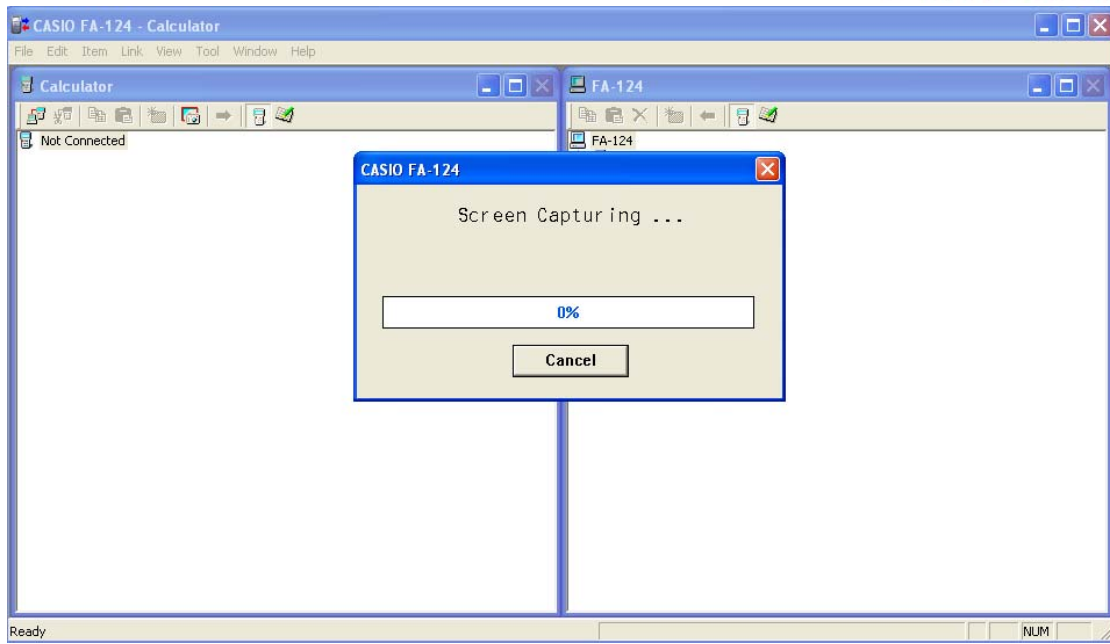
Versão II



Se tiver o modelo FX-9860G basta pressionar a tecla AC/^{on}.

No FA-124, pressione o botão com a máquina fotográfica. Na calculadora deve pressionar SHIFT + 7.





Irá surgir no ecrã do FA124 esta imagem.

